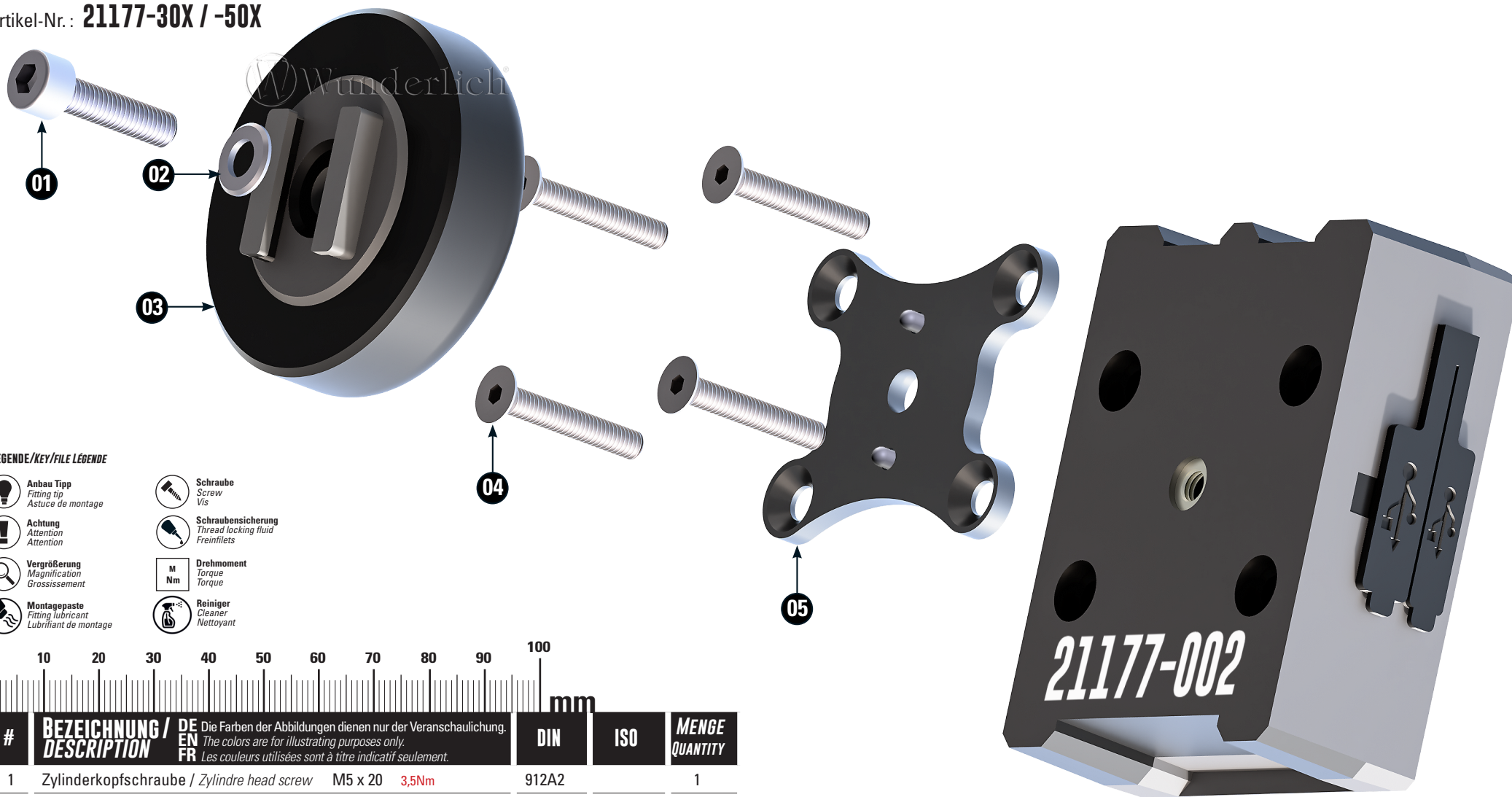








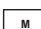

# SP-CONNECT MODUL

SP-Connect Module

Artikel-Nr.: 21177-30X / -50X



## LEGENDE/KEY/FILE LEGENDE

-  **Anbau Tipp**  
Fitting tip  
Astuce de montage
-  **Achtung**  
Attention  
Attention
-  **Vergrößerung**  
Magnification  
Grossissement
-  **Montagepaste**  
Fitting lubricant  
Lubrifiant de montage
-  **Schraube**  
Screw  
Vis
-  **Schraubensicherung**  
Thread locking fluid  
Freiniflets
-  **Drehmoment**  
Torque  
Torque
-  **Reiniger**  
Cleaner  
Nettoyant

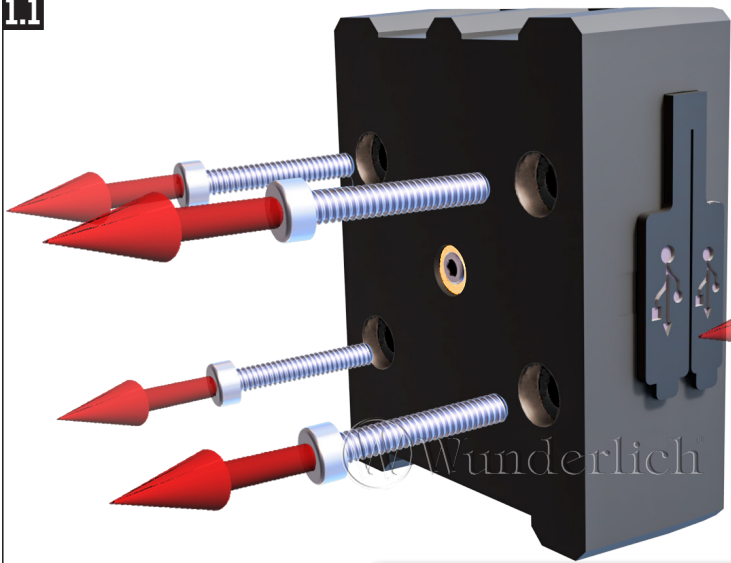


#	BEZEICHNUNG / DESCRIPTION	DE EN FR	Die Farben der Abbildungen dienen nur der Veranschaulichung. The colors are for illustrating purposes only. Les couleurs utilisées sont à titre indicatif seulement.	DIN	ISO	MENGE QUANTITY
1	Zylinderkopfschraube / Zylindre head screw	M5 x 20	3,5Nm	912A2		1
2	U-Scheibe / Washer	M5		125A2		1
3	Adapter / Adaptor					1
4	Senkkopfschrauben / countersunk screws	M4 x 25	3,0Nm	7991A2	7991A2	4
5	Positions-Blech / Position plate					1

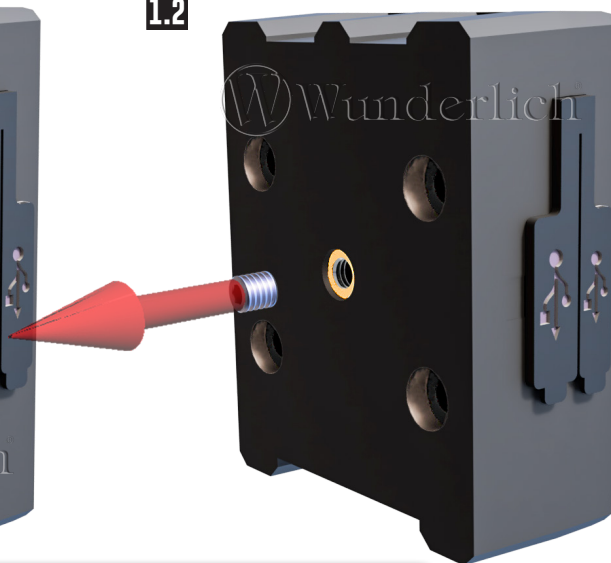
DIE NR. 1 WELTWEIT FÜR HOCHWERTIGES BMW MOTORRADZUBEHÖR.

01

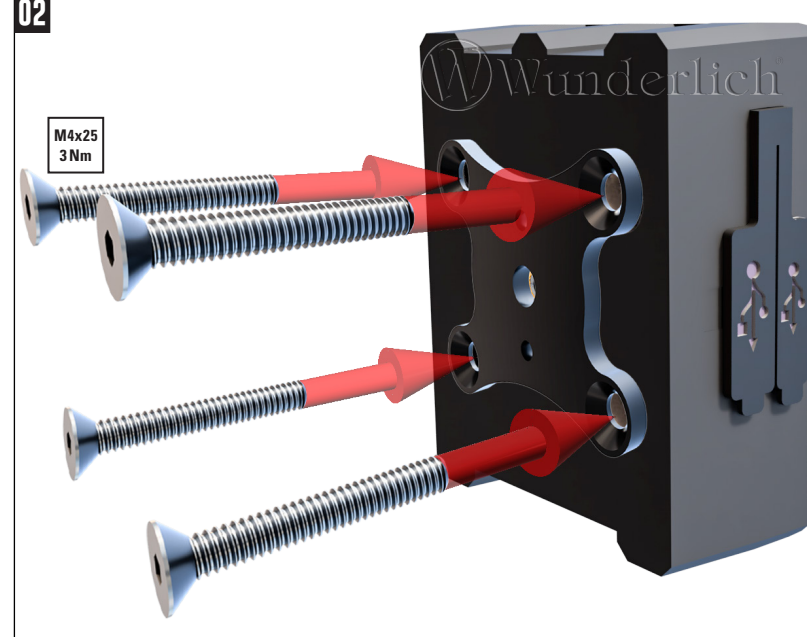
1.1



1.2



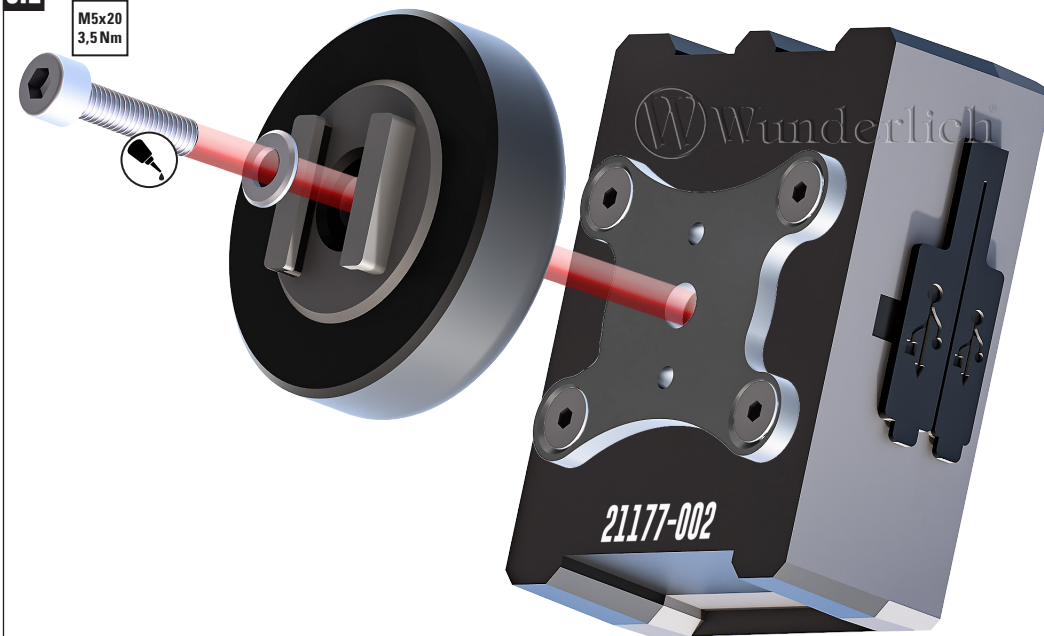
02



**DE ZYLINDERKOPFSCHRAUBEN UND DER GEWINDESTIFT FALLEN WEG**

*EN Zylinder head screw and grub screw not required  
FR Vis sans tête non applicable*

3.1



3.2



