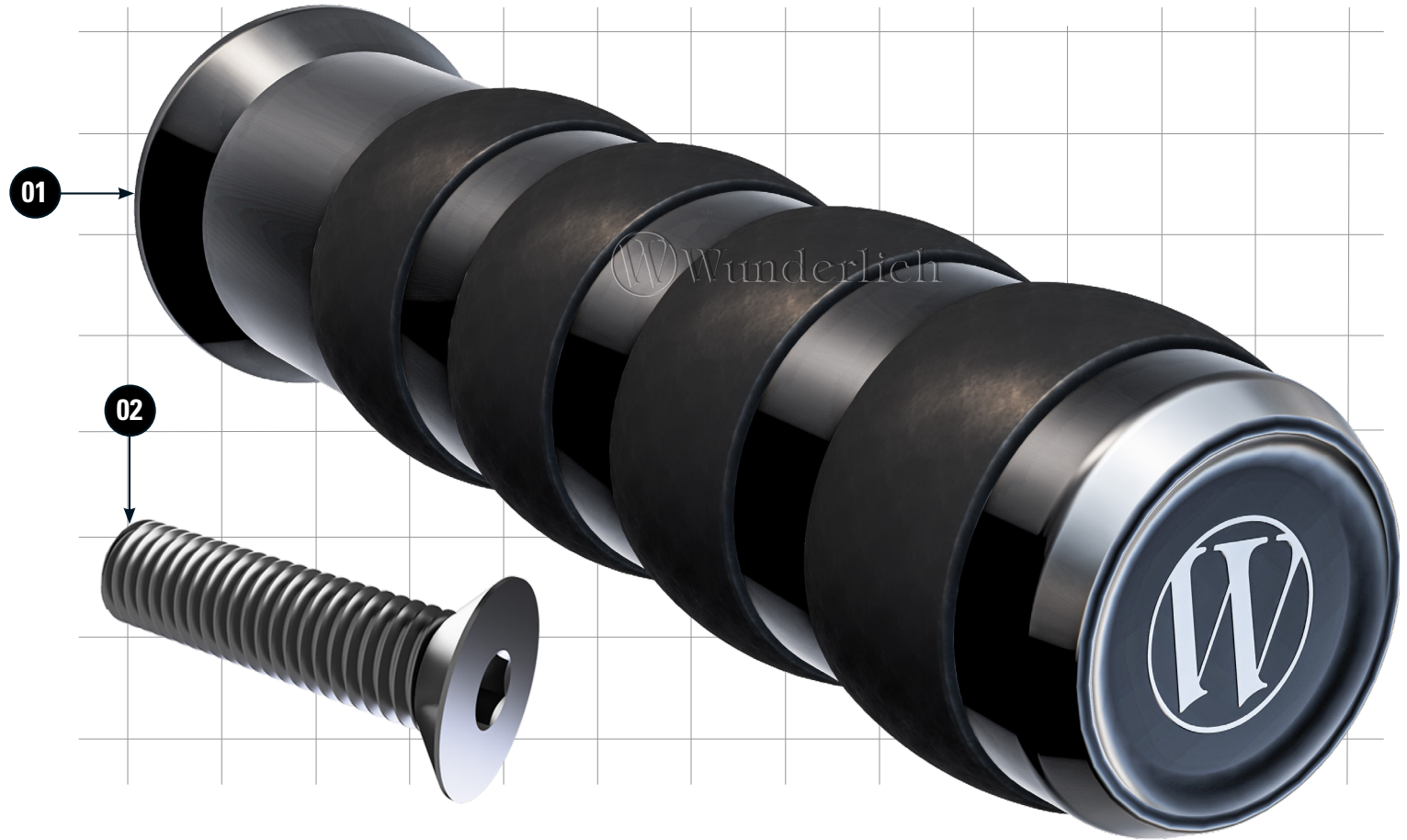


# BREMSHEBELVERGRÖßERUNG







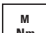

Brake lever extension | Ampliación de pedal de freno | Extension de levier de frein | Estensione della leva del freno

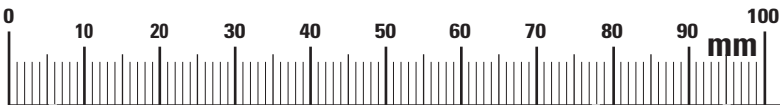
**DE** Die Farben der Abbildungen dienen nur der Veranschaulichung.  
**EN** The colors are for illustrating purposes only.  
**FR** Les couleurs utilisées sont à titre indicatif seulement.

Artikel.-Nr: **18200-10X**

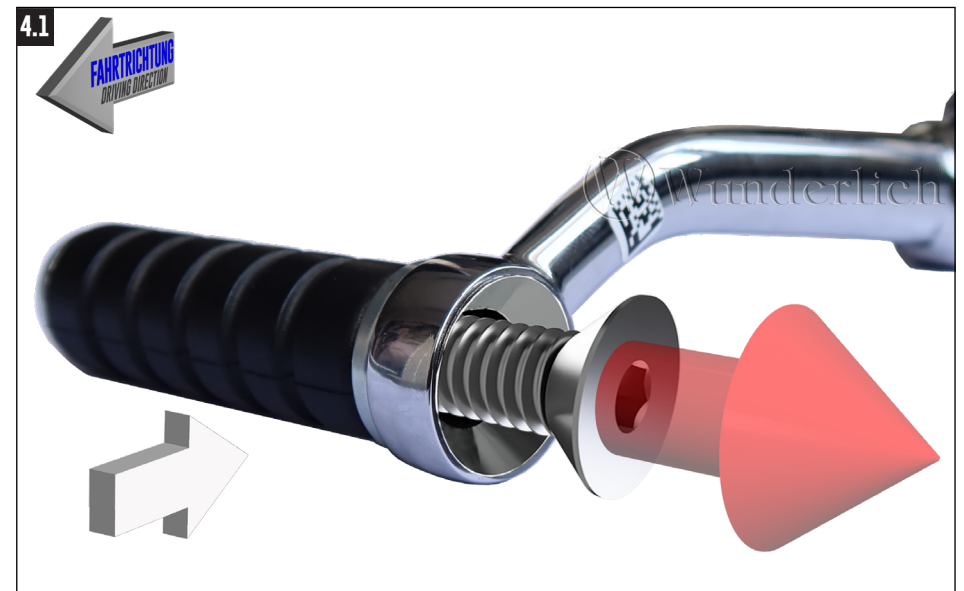
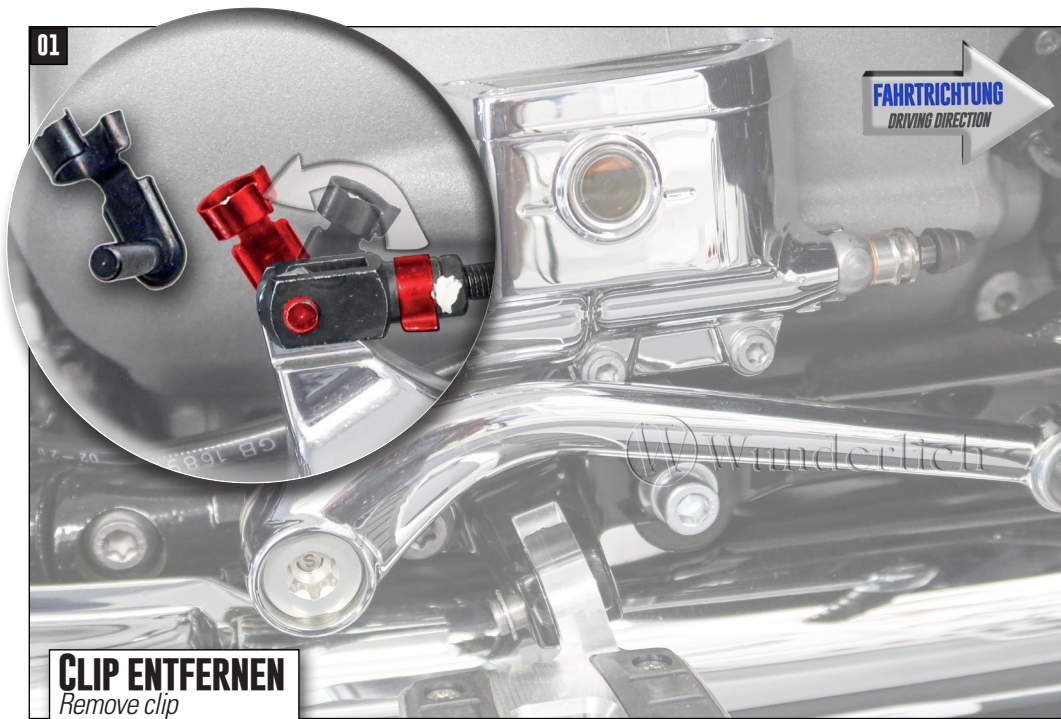


## LEGENDE/KEY/FILE LÉGENDE

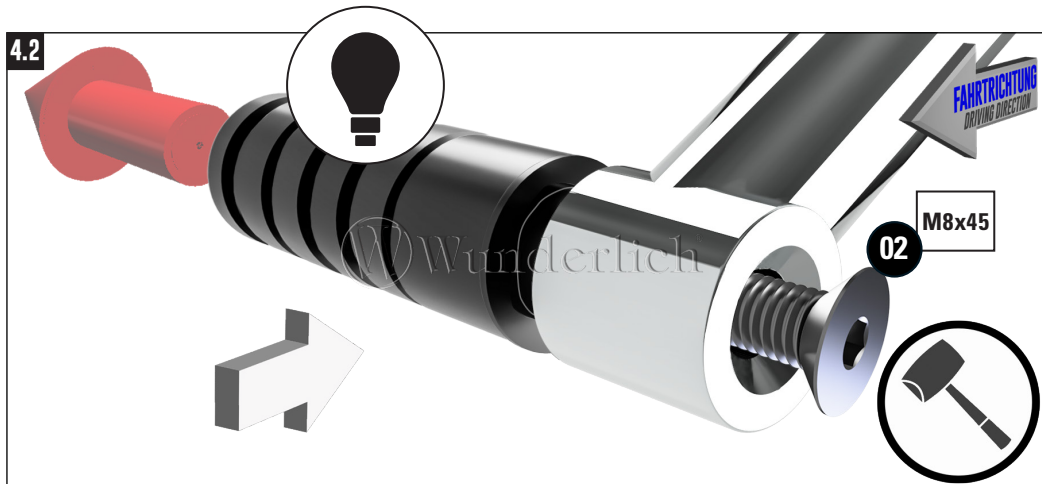
-  **Anbau Tipp**  
Fitting tip  
Astuce de montage
-  **Achtung**  
Attention  
Attention
-  **Vergrößerung**  
Magnification  
Grossissement
-  **Montagepaste**  
Fitting lubricant  
Lubrifiant de montage
-  **Zusammenbauen**  
Assemble  
Assembler
-  **Schraubensicherung**  
Thread locking fluid  
Freinfilets
-  **Drehmoment**  
Torque  
Torque
-  **Gummi Hammer**  
Rubber Hammer  
Marteau en caoutchouc



|   | BEZEICHNUNG /<br>DESCRIPTION                   | DIN  | ISO   | MENGE<br>QUANTITY |
|---|--|------|-------|-------------------|
| 1 | Bremshebelvergrößerung / Brake lever extension |      |       | 1                 |
| 2 | Senkkopfschraube / lens head screw M8 x 45     | 7991 | 10642 | 1                 |

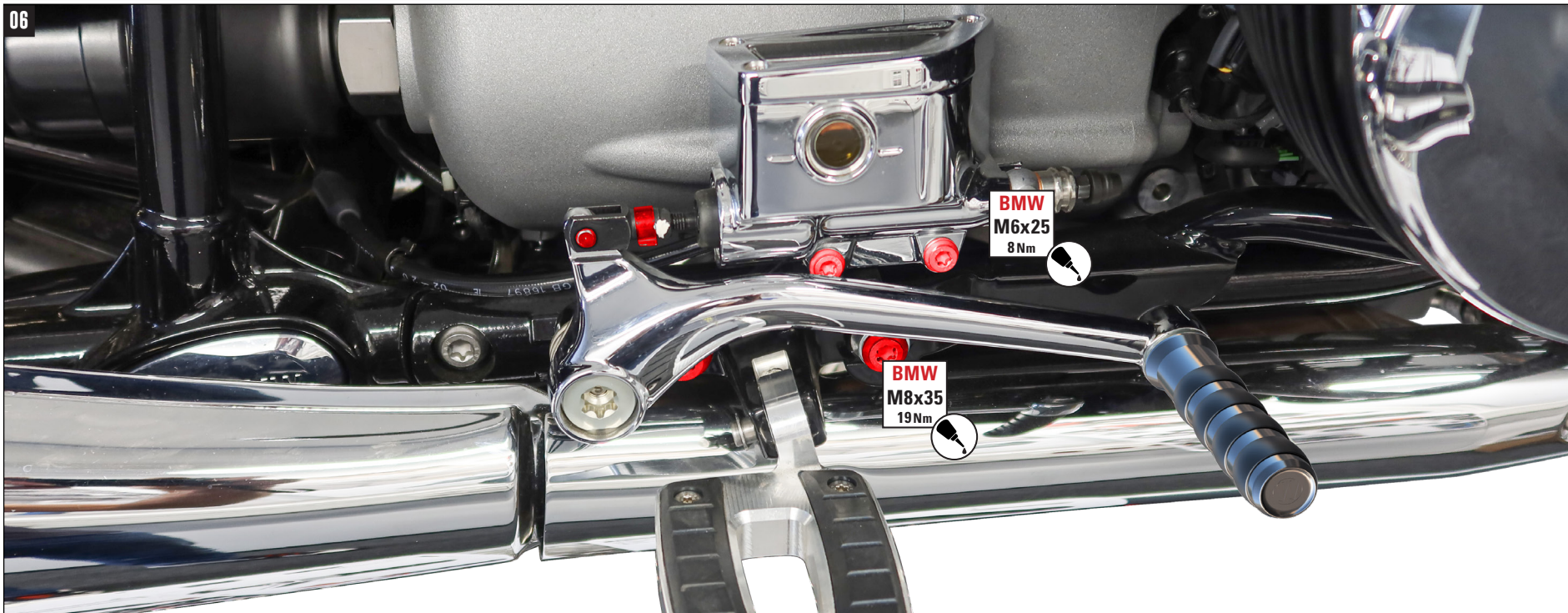
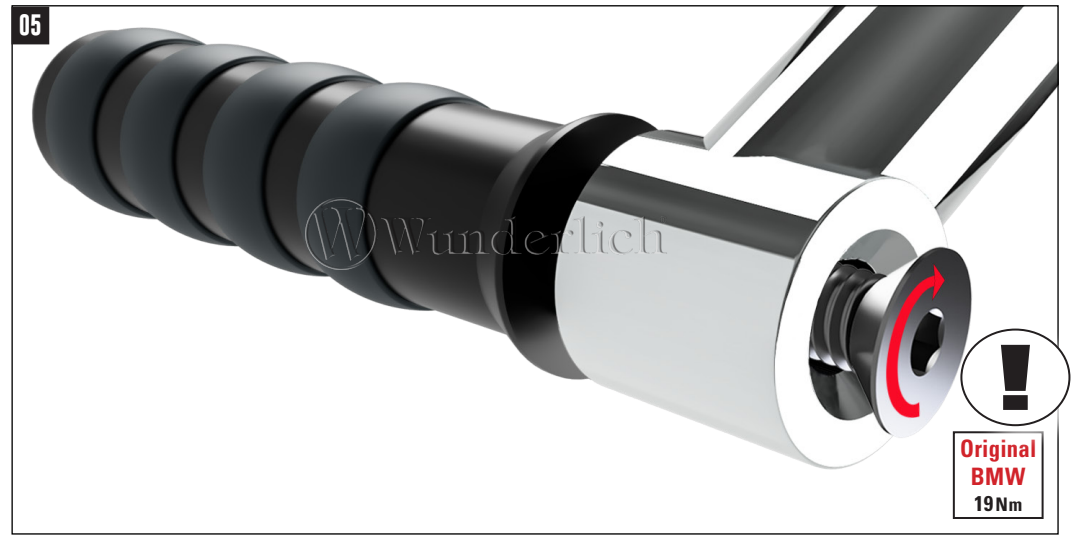






**SCHRAUBE M8x45 WIRD NUR ZUM AUSTREIBEN BZW. -PRESSEN DES ORIG. HEBELS BENÖTIGT.**

*Screw is M8x45 only needed for knocking out or pressing out.*  
*La vis M8x45 n'est nécessaire que pour frapper ou presser.*



**BREMSHEBEL IN UMGEKEHRTER REIHENFOLGE MONTIEREN.**

*Mount the brake lever in reverse order.*  
*Montez le levier de frein dans l'ordre inverse.*